



SERVICE BULLETIN

Classification:

EM10-003

Reference:

NTB10-097

Date:

August 23, 2010

EXHAUST HEAT SHIELD NOISE

APPLIED VEHICLES: 2002 – 2006 Altima (L31) with VQ35DE (V6) engine **only**
2007 – 2010 Altima Sedan (L32)
2008 – 2010 Altima Coupe (CL32)
2007 – 2010 Altima Hybrid (L32HV)
2004 – 2008 Maxima (A34)
2009 – 2010 Maxima (A35)
2004 – 2009 Quest (V42)

IF YOU CONFIRM:

A noise is coming from the front exhaust tube heat shield(s) due to rattle.

ACTION:

Secure the heat shield(s) with new band clamps (see **PARTS INFORMATION**).

- Refer to **REPAIR PROCEDURE** starting on Page 3.

Do not replace the front exhaust tube for this incident, if it should occur.

IMPORTANT: The purpose of **ACTION** (above) is to give you a quick idea of the work you will be performing. You **MUST** closely follow the entire **SERVICE PROCEDURE** (starting on Page 3) as it contains information that is essential to successfully completing this repair.

Nissan Bulletins are intended for use by qualified technicians, not 'do-it-yourselfers'. Qualified technicians are properly trained individuals who have the equipment, tools, safety instruction, and know-how to do a job properly and safely. NOTE: If you believe that a described condition may apply to a particular vehicle, DO NOT assume that it does. See your Nissan dealer to determine if this applies to your vehicle.

PARTS INFORMATION

DESCRIPTION	PART #	QUANTITY
CLAMP –EXHAUST TUBE UPPER	20560-ZX00A	as needed

CLAIMS INFORMATION

Submit a Primary Failed Part (PP) line claim using the following claims coding:

DESCRIPTION	PFP	OP CODE	SYM	DIA	FRT
Heat Shield Repair (Two Band Clamps)	(1)	FX41AA	BC	54	0.5

(1) Refer to the electronic parts catalog (FAST or equivalent) and use the appropriate Front Exhaust Tube assembly part number as the Primary Failed Part (PFP).

If needed on same repair line

DESCRIPTION	PFP	OP CODE	SYM	DIA	FRT
Install Two Additional Band Clamps	(1)	FX411A	BC	54	0.1

(1) Refer to the electronic parts catalog (FAST or equivalent) and use the appropriate Front Exhaust Tube assembly part number as the Primary Failed Part (PFP).

SERVICE PROCEDURE

WARNING: The exhaust system may be hot. Allow to cool down before inspection / repairs.

NOTE: Exhaust system parts do not need to be removed for this inspection / repair.

1. Raise the vehicle on a hoist.
2. Inspect the heat shields on the front exhaust tube for the following:
 - Heat shield contact with the exhaust tube.
 - Separated / missing band clamp(s).
 - Weld separation(s).
3. If a heat shield is found contacting the exhaust tube, pry it away to allow a minimum 1 mm (.040 inch) space.
 - Road test the vehicle to verify the repair.
4. If a weld or band clamp is separated, or the band clamp is missing, install new band clamps as needed.
 - For band clamp(s) location, refer to the pictures (starting on Page 5) that applies to your vehicle.
5. Secure the band clamp with the hex bolt located on the side (or on top, if needed). See Page 4, Figure 1 for example.

WARNING: Do NOT install the hex bolt on the bottom of the exhaust tube.

- Band clamp hex bolt torque: 4.0 – 5.5 N•m (0.4 – 0.56 Kg-m, **2.9 – 4.0 ft-lb**)
6. After securing the band clamp, cut off the clamp's excess at the end.
 - Wrap the end of the band clamp over the hex bolt, and then cut off the excess band clamp within 5 mm (0.2 inches) past the hex bolt (see Page 4, Figure 2).

WARNING: Be careful of sharp edges after cutting off the excess band clamp.

7. After band clamp(s) installation, road test the vehicle to verify the repair.

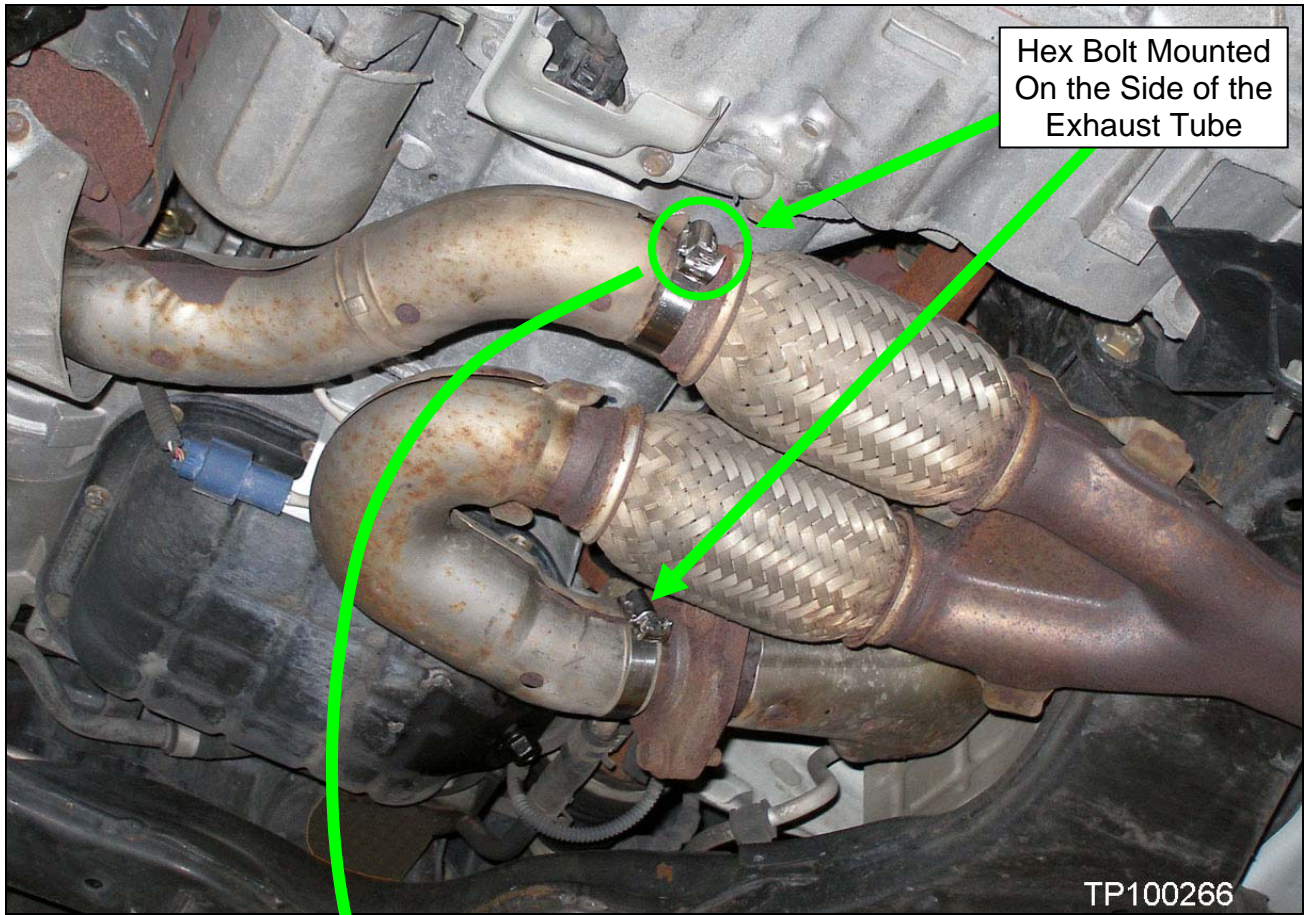


Figure 1

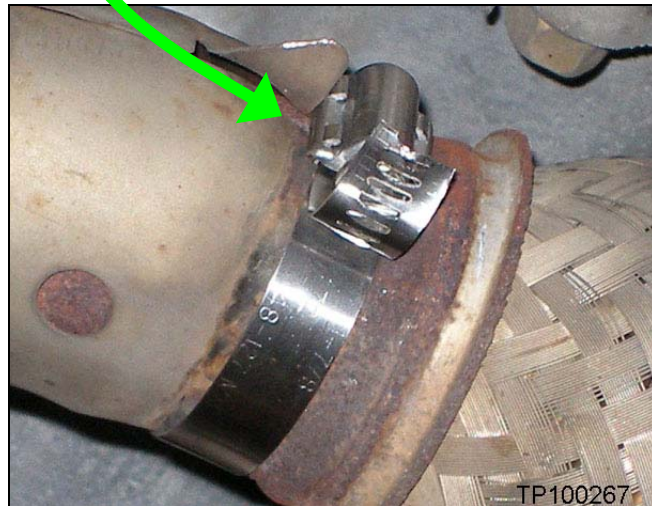
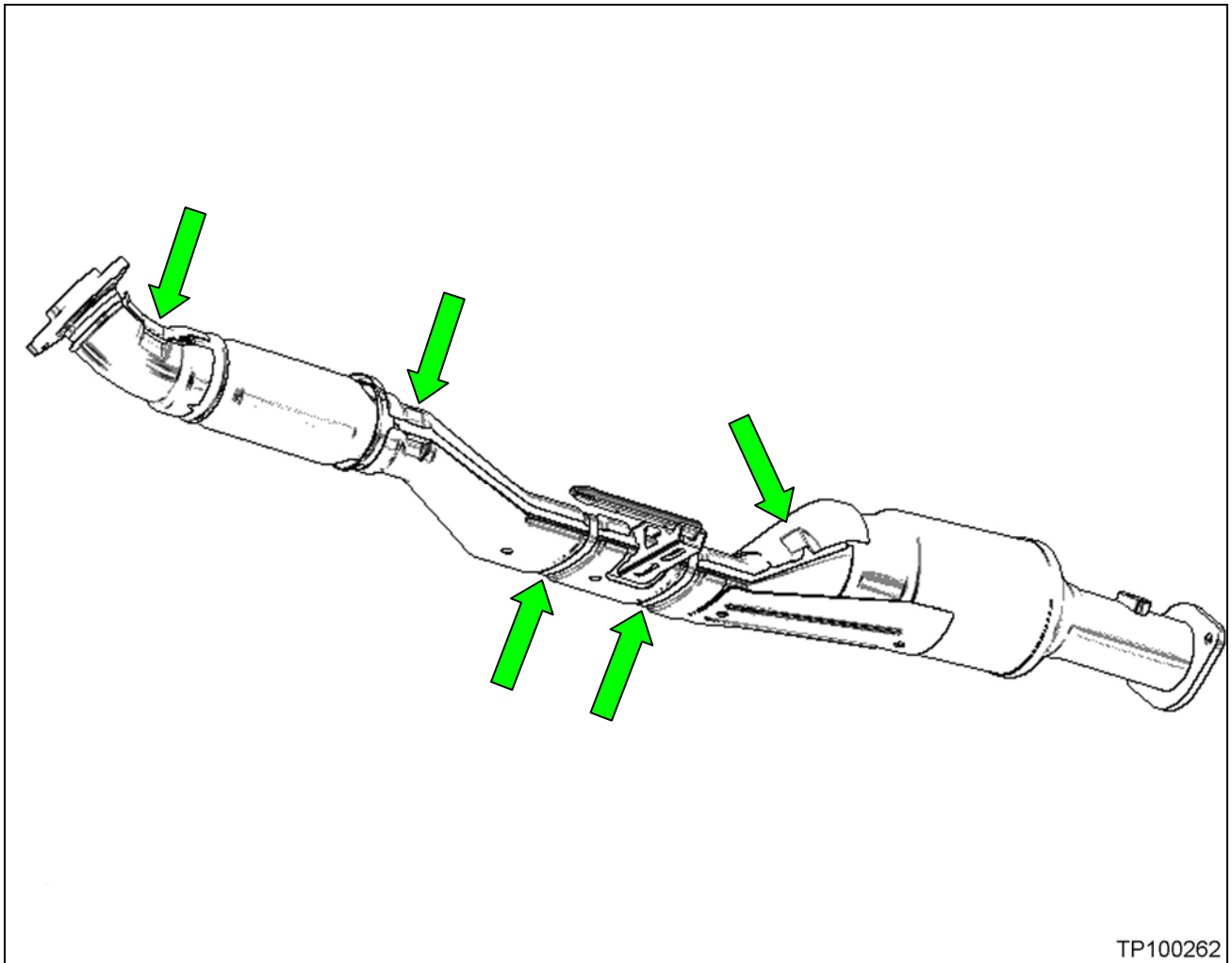
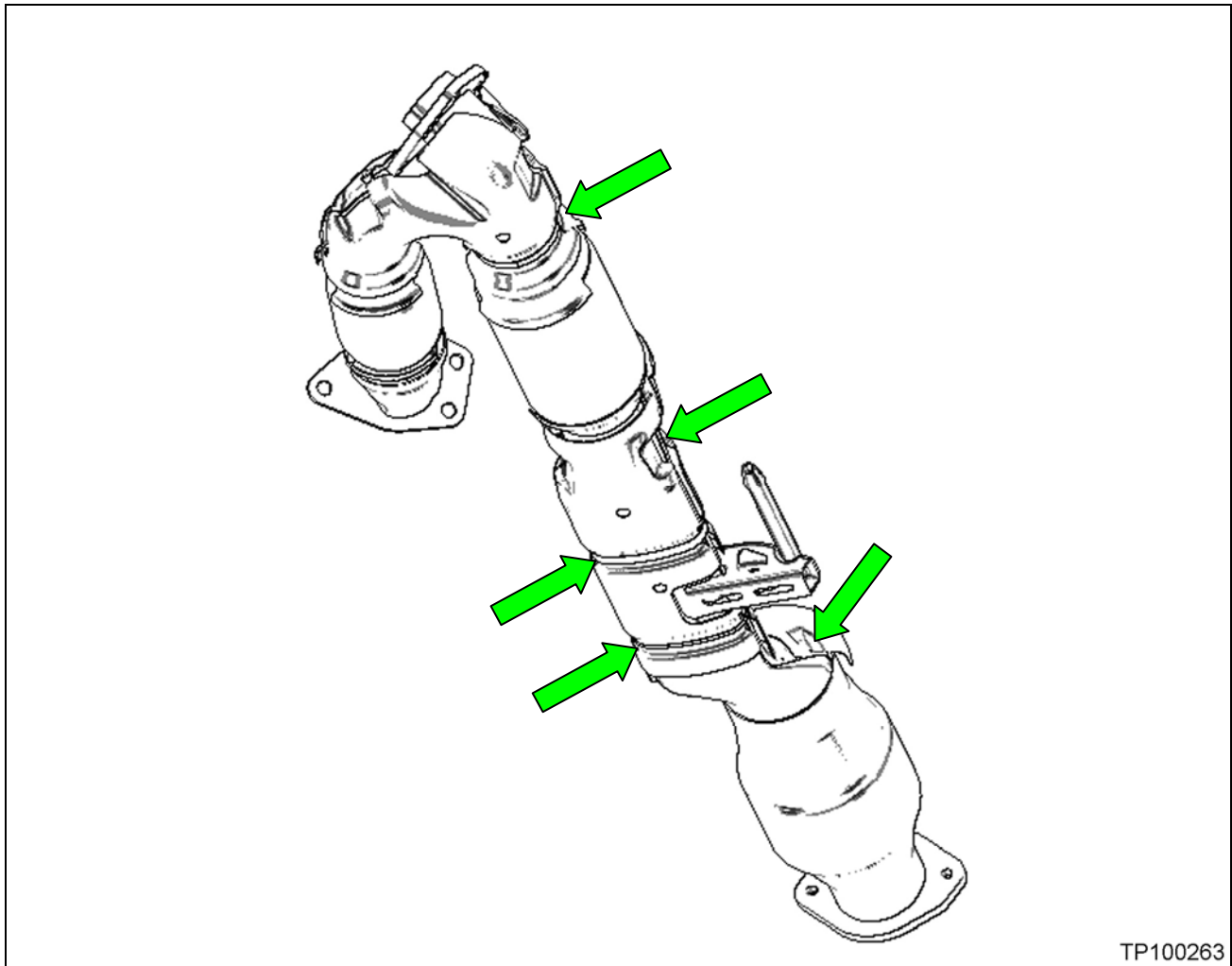


Figure 2



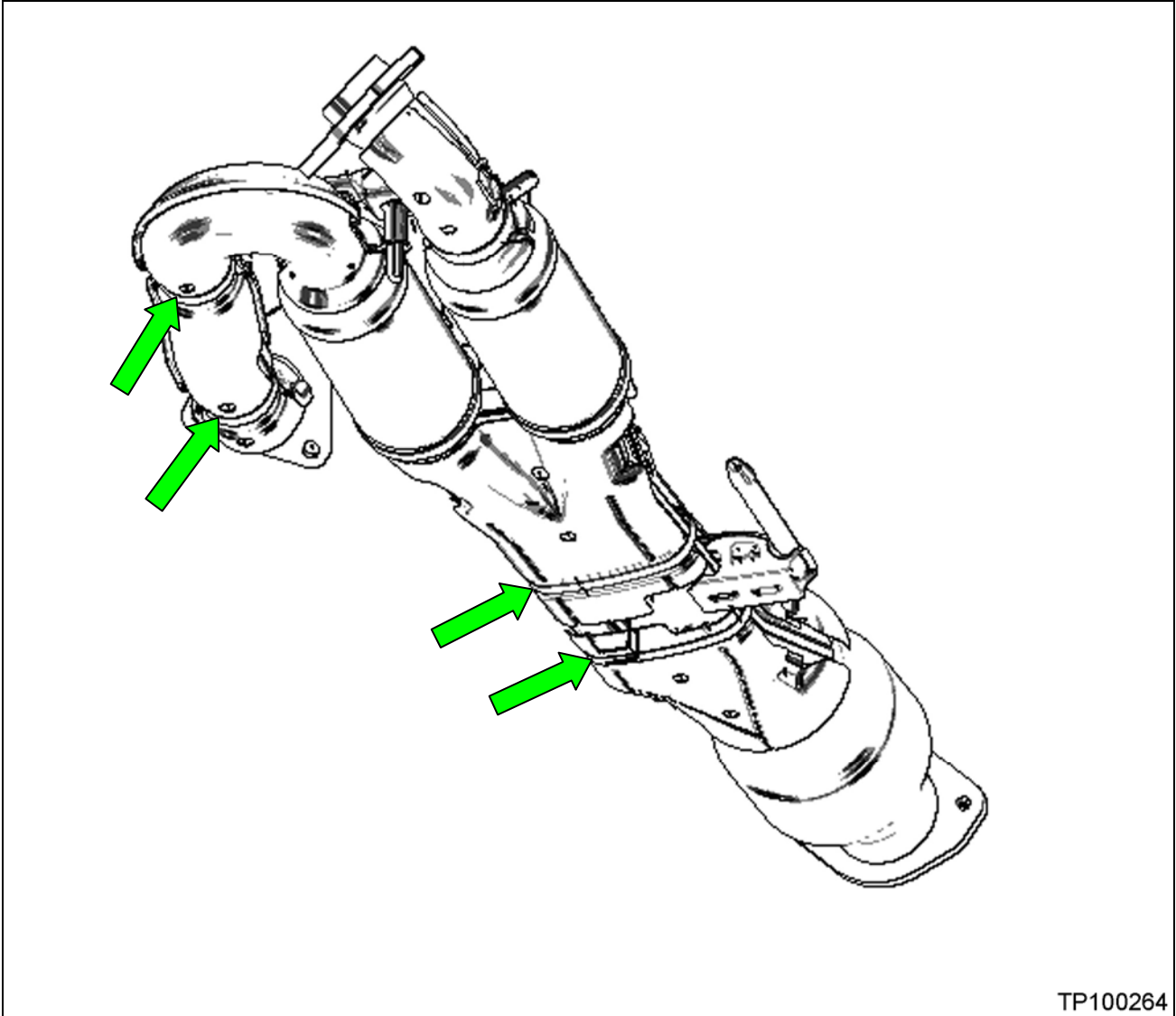
TP100262

2007-2010 Altima Sedan and Hybrid, and 2008-2010 Coupe: QR25DE (4 cyl) engine



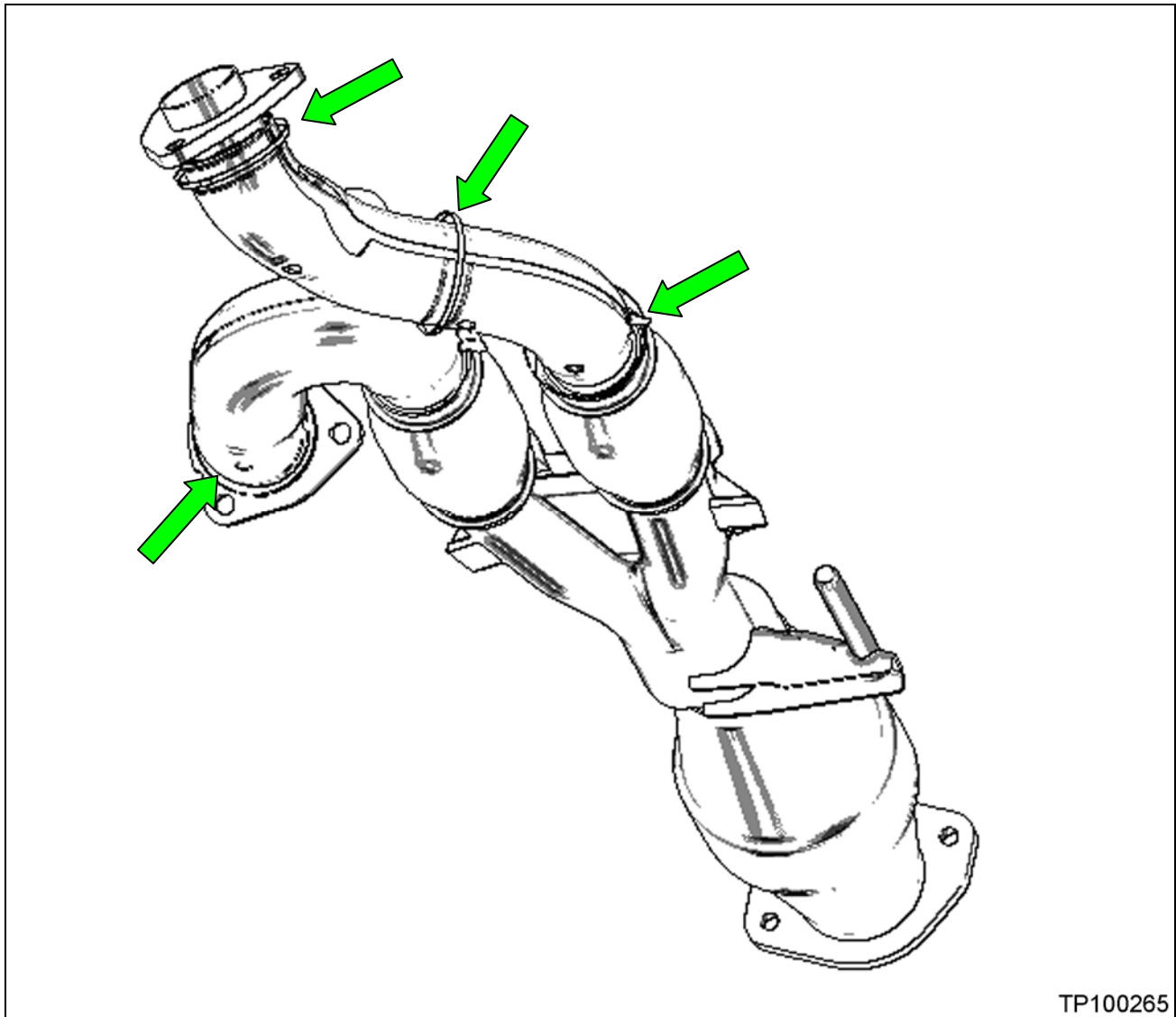
TP100263

2007-2010 Altima Sedan and 2008-2010 Coupe: VQ35DE (6 cyl) engine



TP100264

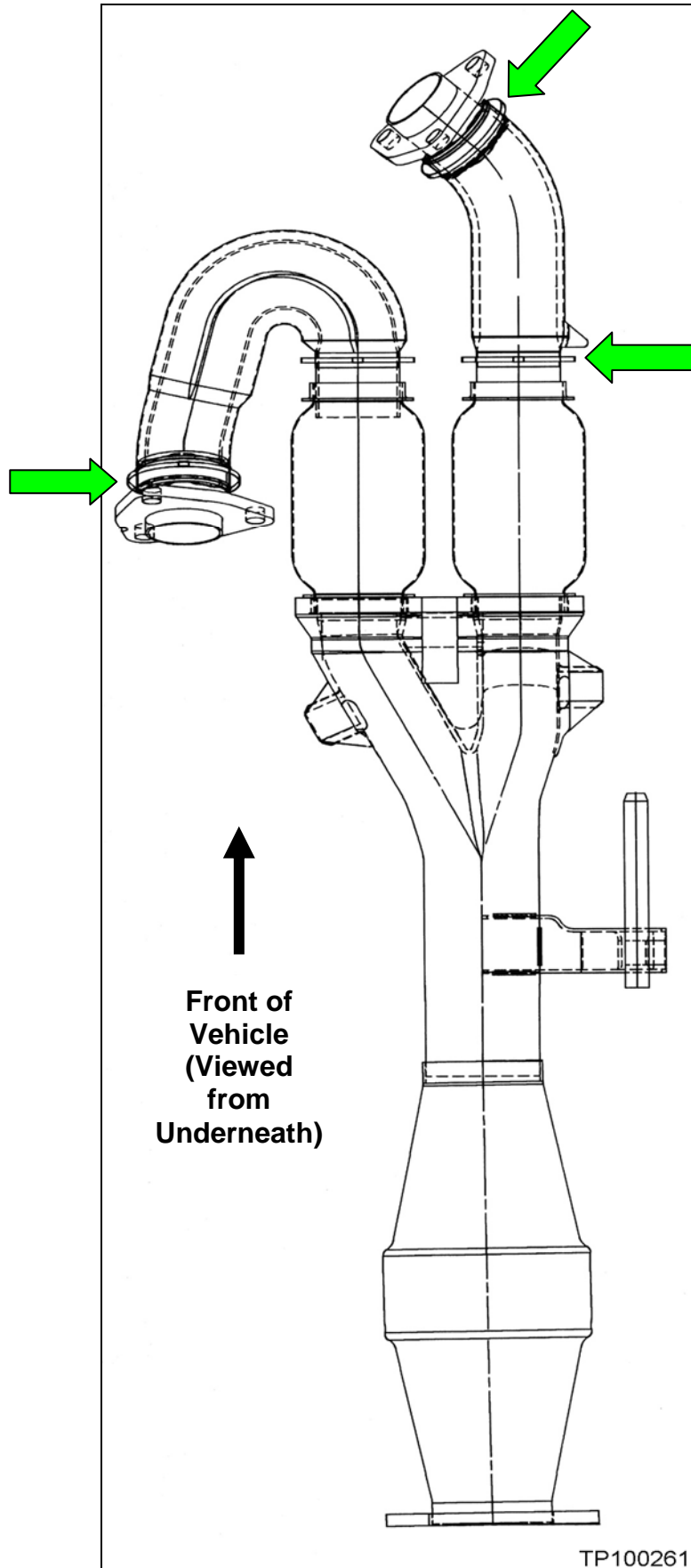
2009-2010 Maxima



TP100265

2004-2008 Maxima, 2004-2009 Quest,
and 2005-2006 Altima with VQ35DE (6 cyl) engine and A/T.

This picture is similar for all vehicles listed above.



Altima: 2002-2004 with 6 cyl engine, and 2005-2006 with 6 cyl engine and M/T